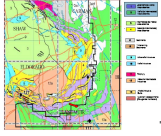


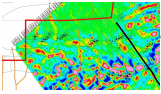
GOLDEN CHALICE

CANADA

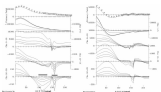
How Airborne Time Domain EM Surveys Can Help you Find a Mine.



Golden Chalice discovered a new Ni-Cu-PGE deposit near Timmins, Ontario. Nickel mineralization is associated with disseminated, fracture filled and blebs of sulphide throughout a 72.5 metre core length.



The discovery was made using the results of a VTEM airborne survey.



Drilling on the anomaly yields 1.14% Ni over a 72.5 m section along with copper, cobalt and PGEs.

A borehole TDEM survey confirmed the presence of a conductor.

