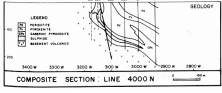


# RADIO HILL

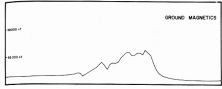
## AUSTRALIA

---

Combining Airborne, Ground and Drilling Leads to Success.

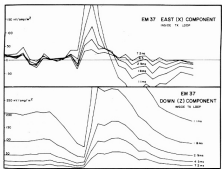


The Radio Hill deposit is a shallow dipping deposit associated with a layered ultramafic complex overlain by a mafic sequence.



A regional airborne magnetic survey detected the magnetic signature of the deposit.

A ground magnetic survey was able to define individual units in the complex.



TDEM delineated two conductors. Follow-up drilling intersecting massive sulphide mineralisation.

