

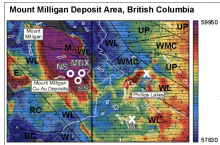
# MOUNT MILLIGAN

## CANADA

---

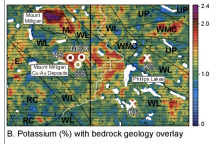
From the intrusion to the deposit using geophysics.

Mount Milligan is a large alkalic Cu-Au deposit located in British Columbia.



A. Magnetic Total Field (nT) with geology overlay

A magnetic survey delineated the alkaline intrusion.



B. Potassium (%) with bedrock geology overlay

Spectrometry was used to further reduce the area of interest. The survey delineated the zone of potassic alteration related to the deposit.

