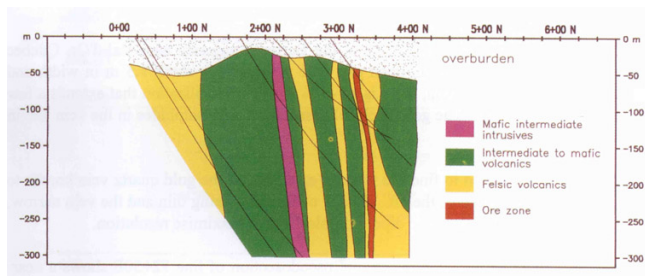


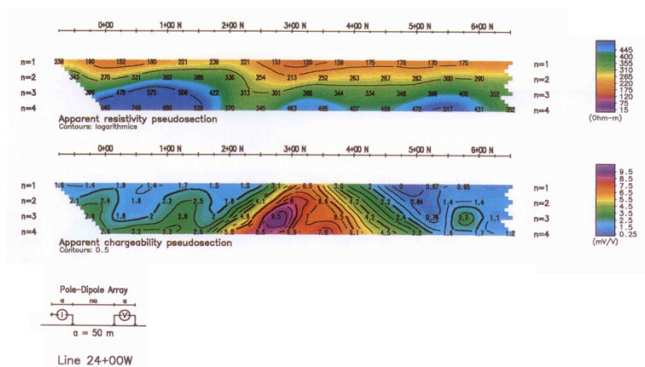
ESTRADES

CANADA

Les riches dépôts de Zinc ne sont pas de bonnes cibles pour l'utilisation du EM. La PP est par contre une bonne alternative.



Estrades is a narrow Cu-Zn VMS deposit covered by a layer of conductive overburden, located in the Abitibi Greenstone belt.



The deposit is clearly detected with IP, but is the resistivity data useful?

Yes, according to Image2D™. It helped locate the drill rig where the overburden is thinner (on the South side).

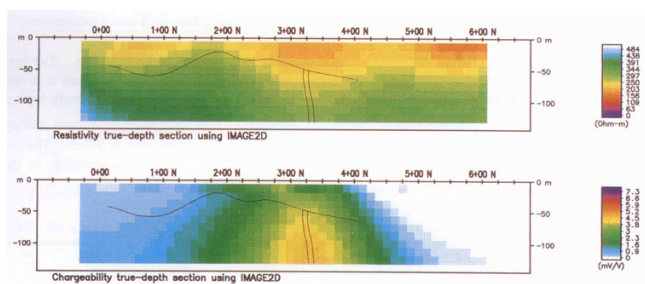


Image2D™ yields more quantitative information than the conventional IP pseudosections.

