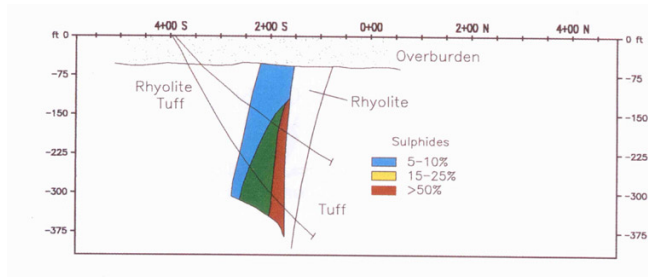


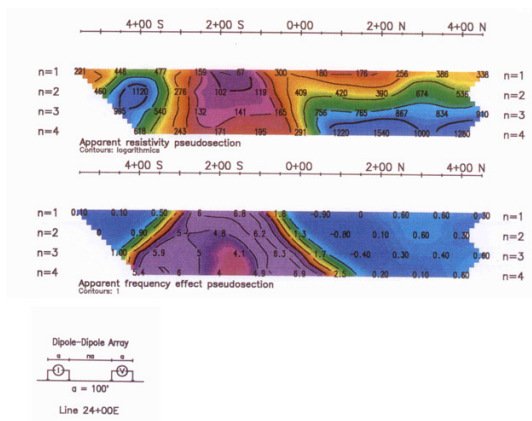
BOUCHARD-HÉBERT

CANADA

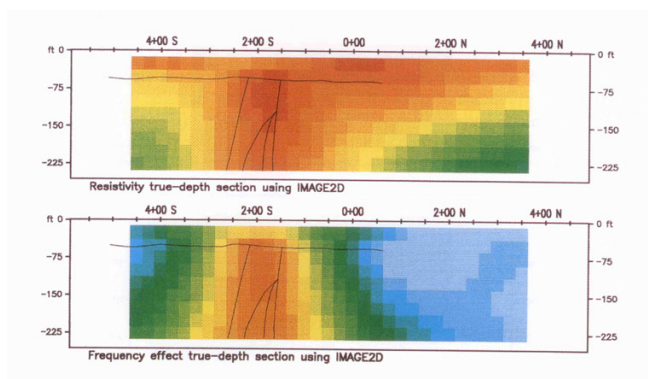
With Image2D™, the DDH target is obvious even if you're not a PhD in geophysics!



Bouchard-Hébert is a Cu-Zn VMS deposit located in the Abitibi belt at a depth of 100 metres. A wide disseminated 5-25% sulphide halo is located in the footwall of a semi-massive sulphide Lens > 50 %.



The resistivity and IP pseudosections show the typical signature of a polarizable conductor.



IP is an important tool for base metals exploration. Pseudosections converted through the algorithm of Image2D™ clearly delineate the mineralized zone.

