

MONTPELLIER

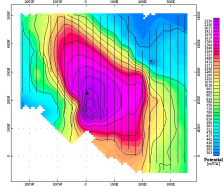
CANADA

Mise-à-la-masse does not lie. It will show the extension of a conductor

Drilling intersected a graphitic horizon at a depth of 50 metres.

Follow up drilling failed to extend the zone laterally along the presumed NW-SE trend.

A Mise-à-la-masse survey was performed using the successful hole.



Contours of the normalized potential (mV/A) show the clear and unexpected east-west trend of the graphitic conductor.

Follow up drilling confirmed new interpretation.

