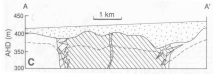


MOUNT WELD

AUSTRALIA

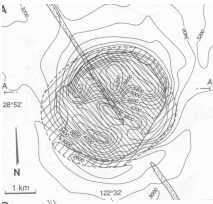
Simple tools such as aeromagnetism and gravity may sometimes be the most effective.

Mount Weld is among the richest rare earth deposits in the world.

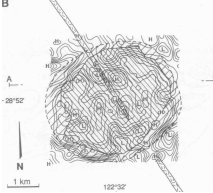


The deposit is hosted within a carbonatite pipe of about 3 to 4 km diameter.

There is no surface expression of the Mount Weld carbonatite because it is covered by alluvium and lacustrine sediments.



An aeromagnetic survey delineated a circular anomaly, typical of a carbonatite intrusive pipe.



A gravimetric survey delineated a similar circular anomaly. Gravity data show the intrusion is associated with a positive 6 mGal. anomaly.

