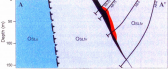


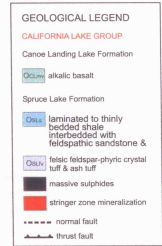
ARMSTRONG

CANADA

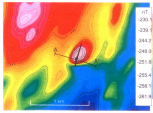
How Magnetic and FDEM Surveys Work Together



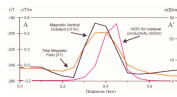
Armstrong is a small, steeply dipping, VMS deposit located in the Bathurst Mining Camp of New Brunswick.



The deposit is hosted by weakly magnetic felsic volcanics.



The magnetic signature of the deposit is clearly visible as an isolated aeromagnetic anomaly.



Because the host rock is weakly magnetic and has low conductivity, the massive sulphide deposit produces a well-defined magnetic and conductivity anomaly.

