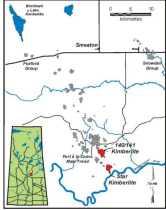


# STAR

## CANADA

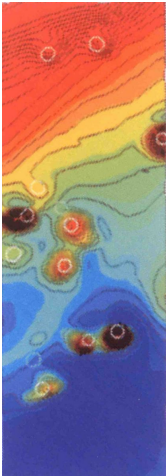
---

### Gravity and Magnetic Surveys Locate World Class Kimberlite Pipes.



The Star Kimberlite pipe is a member of the Fort à la Corne Kimberlite cluster.

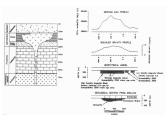
This world class Kimberlite cluster is located 60 km east of Prince Albert, Saskatchewan, Canada.



In 1996 a helicopter-borne magnetic survey revealed several circular magnetic highs within the quiet background in this region.

Follow-up ground magnetic surveys confirmed the presence of shallow, closed anomalies consistent with kimberlites.

Four anomalies were selected for drill testing; these yielded 184 diamonds.



Modeling of the gravity and magnetic data shows that the source is high density and magnetic in contrast to the surrounding shale and overburden. This is consistent with a kimberlite pipe.