

KELLY LAKE

CANADA

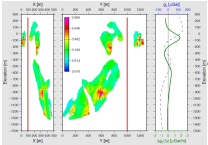
Modeling of the Expected Borehole Gravity Response shows its Potential Value for Mining Exploration.

Kelly Lake is a deep Cu-Ni magmatic deposit located in the Sudbury Mining Camp, Canada.

The Kelly Lake deposit has been well documented by intensive drilling; zone densities have been estimated from drill core and gamma-gamma logging.

Due to the considerable depth of the Kelly Lake deposit, the surface gravity anomaly is negligible.

Using the known density distribution for this deposit the gravity profile for a near-miss hole was modeled.



This model clearly shows that the deposit could be detected from a near-miss borehole.

(borehole profile indicated by red line)