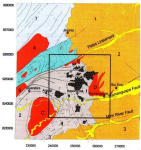


ITAPOROROCA

BRÉSIL

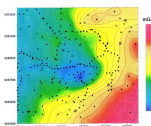
Les modélisations 3D en gravité à l'échelle semi-régionale peuvent mener à de nouvelles découvertes.

Itapororoca is located in the northeast of Brazil

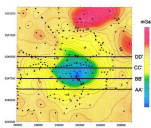


The area is covered by tertiary sediments and alluvium.

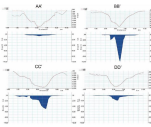
In 1975 an airborne magnetic survey detected a circular anomaly, suggestive of a volcanic intrusive.



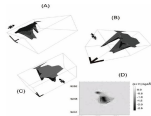
In order to explore the anomaly a Semi-regional gravity survey was conducted, revealing a negative gravity anomaly.



Subtraction of the regional gravitational field revealed the residual field and negative 8mGAL anomaly coincident with a localized aeromagnetic anomaly and with hydrothermally altered outcrop.



2.5 D modeling of the data along 4 profiles was used to estimate the volume of the deposit.



The results of 3D modeling indicate that the intrusion extends to a depth of 8.5 km and has a total volume of 23 km³