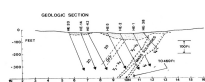


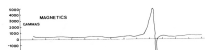
NEW INSCO

CANADA

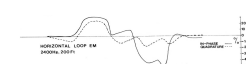
The combination of Gravimetry, EM and MAG, can be a successful approach for VMS targets, as they are dense, conductive and often associated with magnetic minerals.



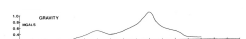
New Insko is a moderately dipping, tabular Cu-Zn VMS type deposit located within the Abitibi greenstone belt.



A MAG survey successfully detected an anomaly with a strong, discrete peak.



HLEM yielded a good response over the sulphide mineralisation and associated graphitic horizon.



Gravimetry was successful in discriminating the density contrast between sulphides and the graphitic horizon.

