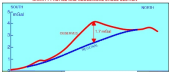


# MURRAY BROOK

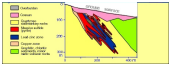
CANADA

---

Gravimetry successfully located the VMS deposit and gave insight into the geometry.



Murray Brook is a large VMS deposit located within the Bathurst mining camp.



Massive sulphide lenses produce a 1.7 mGal residual anomaly over the deposit.

Using the shape of the anomaly, it was also possible to provide information on the orientation of the zone.

