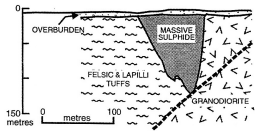


# GALLEN

## CANADA

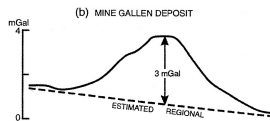
---

Another Example of a Sizable Gravity Anomaly Associated with a Sulphide Body at Surface.



The Gallen deposit is a small zinc VMS lens located in the Noranda Mining Camp of the Abitibi Belt, Canada.

The deposit consists primarily of pyrite, with sphalerite reaching 20% locally.



The gravity profile indicates a 3mGal anomaly.

