

MONTPELLIER

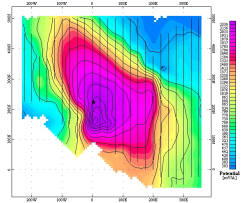
CANADA

La Mise-à-la-masse ne ment pas. Elle montrera l'extension du conducteur.

Drilling intersected a graphitic horizon at a depth of 50 metres.

Follow up drilling failed to extend the zone laterally along the presumed NW-SE trend.

A Mise-à-la-masse survey was performed using the successful hole.



Contours of the normalized potential (mV/A) show the clear and unexpected east-west trend of the graphitic conductor.

✕ Follow up drilling confirmed new interpretation.

