

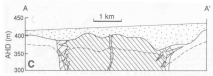
# MOUNT WELD

## AUSTRALIA

---

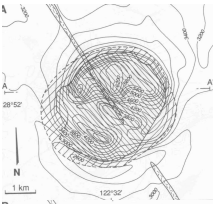
Simple tools such as aeromagnetics and gravity may sometimes be the most effective.

Mount Weld is among the richest rare earth deposits in the world.

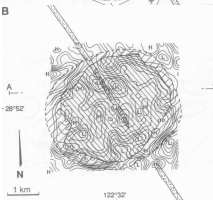


The deposit is hosted within a carbonatite pipe of about 3 to 4 km diameter.

There is no surface expression of the Mount Weld carbonatite because it is covered by alluvium and lacustrine sediments.



An aeromagnetic survey delineated a circular anomaly, typical of a carbonatite intrusive pipe.



A gravimetric survey delineated a similar circular anomaly. Gravity data show the intrusion is associated with a positive 6 mGal. anomaly.

